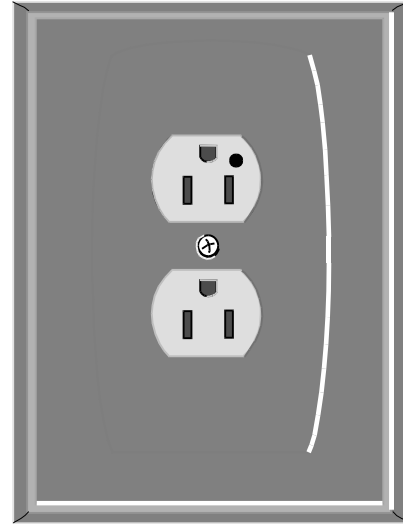


580 Series Electrical Devices

Elements

- Conforms with NEC requirements
- Hospital grade receptacles
- Modular design
- Combines with Chemetron® 500/560 Series Medical Gas Outlet Stations
- Blank modules for custom services
- UL Listed components



Description

The Chemetron 580 Series modular electrical devices provide a convenient method to provide electrical services in patient care locations. They gang with any modular outlet or another modular electrical device to provide a finished console.

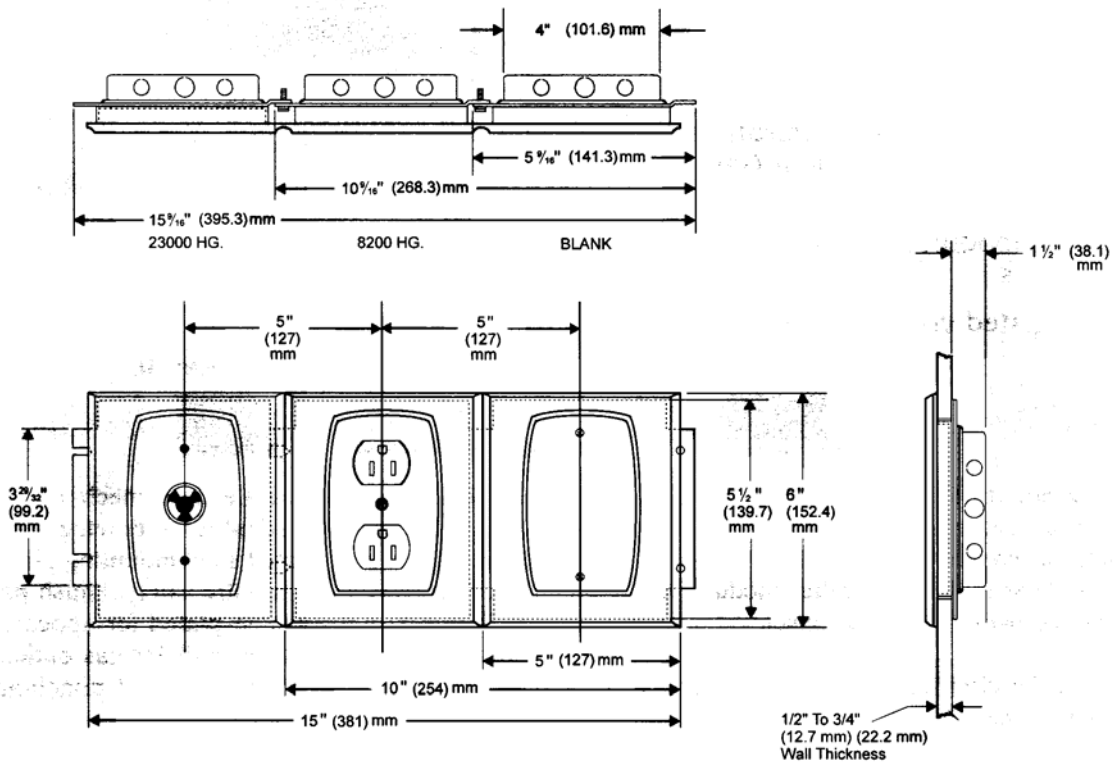
The modular electrical devices are field-gangable in any order desired by the facility.

The devices include the electrical mechanism and two-gang galvanized steel electrical boxes mounted in a zinc-plated steel mounting plate for corrosion resistance and fire safety. Finish plates are die-cast zinc, chrome-plated for appearance and to match Chemetron modular gas outlets. A blank version is available for field punching to mount non-standard devices.

Ordering Information

Catalog #	Quantity	Device Description
64-07-0001		120V 20 AMP 23000HG Twist Lock
64-07-0010		120V 15 AMP 8200HG Ivory Duplex
64-07-0011		120V 15 AMP 8200HG Red Duplex
64-07-0020		120V 20 AMP 8200HG Ivory Duplex
64-07-0021		120V 20 AMP 8200HG Red Duplex
64-07-0030		120V 15 AMP 8200HG SC62 Safety Ivory Duplex
64-07-0031		120V 15 AMP 8200HG SC62 Safety Red Duplex
64-07-0040		Switch Ivory SPST
64-07-0041		Switch Red SPST Lighted Handle
64-07-0042		Switch Ivory 3 Way
64-07-0060		Ground SLR 3S Double
64-07-0070		Blank

Dimensional Data



Refer to installation instructions prior to assembly.



MEDICAL GAS RESOURCES
MEDICAL GAS INNOVATIVE SOLUTIONS

16371 Gothard Street, Suite "F"
Huntington Beach, CA 92647
888-743-8298

www.medicalgasresources.com
info@medicalgasresources.com

All specifications are nominal and subject to change without notice.