

## *560 Series DISS Medical Gas Outlets*

### Elements

- Safety keyed to help prevent cross-connections
- Conforms to NFPA 99 and CGA/DISS standards
- Modular design
- Cleaned for oxygen service
- UL Listed



### Description

The Chemetron® 560 Series DISS outlet stations provide convenient access to medical gases in patient care locations. They are fully compatible with DISS style diameter indexed threaded adapters.

The outlets are field-gangable in any order desired by the facility. Outlets are spaced 5" (12.7 cm) center to center, and may be ganged with Chemetron modular electrical assemblies in a console arrangement. Outlet finish plates and rough-in plates are pin indexed using steel pins for positive cross-

connection prevention. Primary valves are made of brass, chrome-plated, and contain a self-sealing poppet. Primary valves are field adjustable to compensate for variations in plaster thickness of 1/2" to 3/4". Outlets may be special ordered with extended valve bodies that allow for an additional 3/8" adjustment.

The type K copper inlet tube has a 3/8" OD connection, and can rotate 360 degrees to accommodate any field piping arrangement.



**560 Series DISS Medical Gas Outlet**

The primary gas check can be serviced without shutting off the gas supply.

The outlet stations are fully compliant with NFPA 99 1999, CGA V-5 and CSA Z-305, and are cleaned for oxygen service in accordance with CGA G-4.1. The outlet is UL listed. Rough-in plates for the outlets are zinc plated steel for corrosion resistance and fire safety. Finish plates are die-cast zinc, chrome-plated with brushed

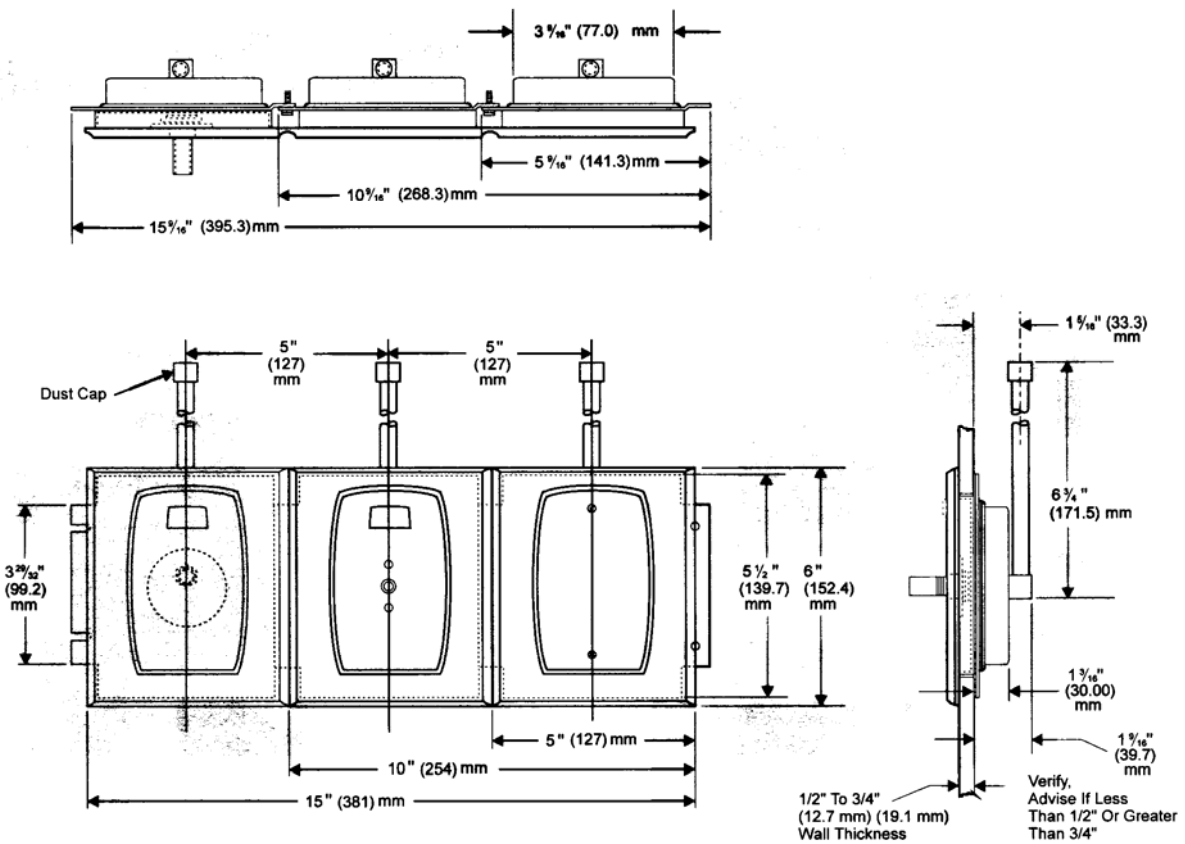
stainless dress plate for appearance. Gas identification is provided by a polycarbonate plastic insert, color-coded by gas service.

Vacuum outlets may be used with or without slide brackets for vacuum collection bottles of up to 1/2-gallon capacity (where slide brackets are used, provide one per vacuum outlet).

**Ordering Information**

Gas Service	Catalog Number U.S. Color Codes	Quantity	Catalog Number ISO Color Codes	Quantity
→ Oxygen	<b>64-04-5601</b>	<b>4</b>	64-04-5651	
→ Vacuum	<b>64-04-5602</b>	<b>4</b>	64-04-5652	
→ Air	<b>64-04-5603</b>	<b>4</b>	64-04-5653	
Nitrous Oxide	64-04-5604		64-04-5604	
Nitrogen	64-04-5605			
Waste Anesthesia Gas Disposal	64-04-5606		64-04-5606	
Carbon Dioxide	64-04-5607		64-04-5607	
Oxygen/CO2 (CO2 less than 7%)	64-04-5608		64-04-5658	
<b>Slide Bracket</b>	<b>64-06-0001</b>		64-06-0001	

**Dimensional Data**



**Refer to installation instructions prior to assembly.**



*560 Series DISS Medical Gas Outlets*



**MEDICAL GAS RESOURCES**  
MEDICAL GAS INNOVATIVE SOLUTIONS

16371 Gothard Street, Suite "F"  
Huntington Beach, CA 92647  
**888-743-8298**

[www.medicalgasresources.com](http://www.medicalgasresources.com)  
[info@medicalgasresources.com](mailto:info@medicalgasresources.com)

All specifications are nominal and subject to change without notice.

*Product Specification*