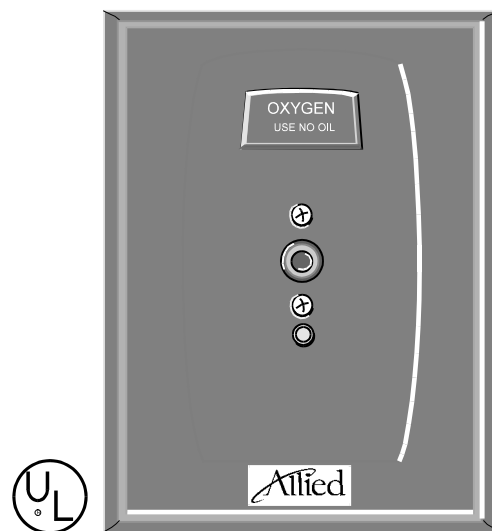


## *500 Series Chemetron Quick-Connect Medical Gas Outlets*

### Elements

- Safety keyed to help prevent cross-connections
- Conforms to NFPA 99 and CGA standards
- Built-in push-button latch release mechanism
- Modular design
- Cleaned for oxygen service
- UL Listed



### Description

The Chemetron® 500 Series outlet stations provide convenient access to medical gases in patient care locations. They are fully compatible with Chemetron style latch-keyed adapters.

The outlets are field-gangable in any order desired by the facility. Outlets are spaced 5" (12.7 cm) center to center, and may be ganged with Chemetron modular electrical assemblies in a console arrangement. Outlet finish plates and rough-in plates are pin indexed using steel pins for positive cross-connection prevention. Primary valves are separate from the finish plate, allowing easy

testing for leaks and cross connection. Primary valves are made of brass, are chrome plated, and contain a self-sealing poppet. Primary valves are field adjustable to compensate for variations in plaster thickness of 1/2" to 3/4". Outlets may be special ordered with extended valve bodies that allow for an additional 3/8" adjustment.

The type K copper inlet tube has a 3/8" OD connection, and can rotate 360 degrees to accommodate any field piping arrangement. The primary gas check can be serviced without shutting off the gas supply.



**500 Series Chemetron Quick-Connect Medical Gas Outlets**

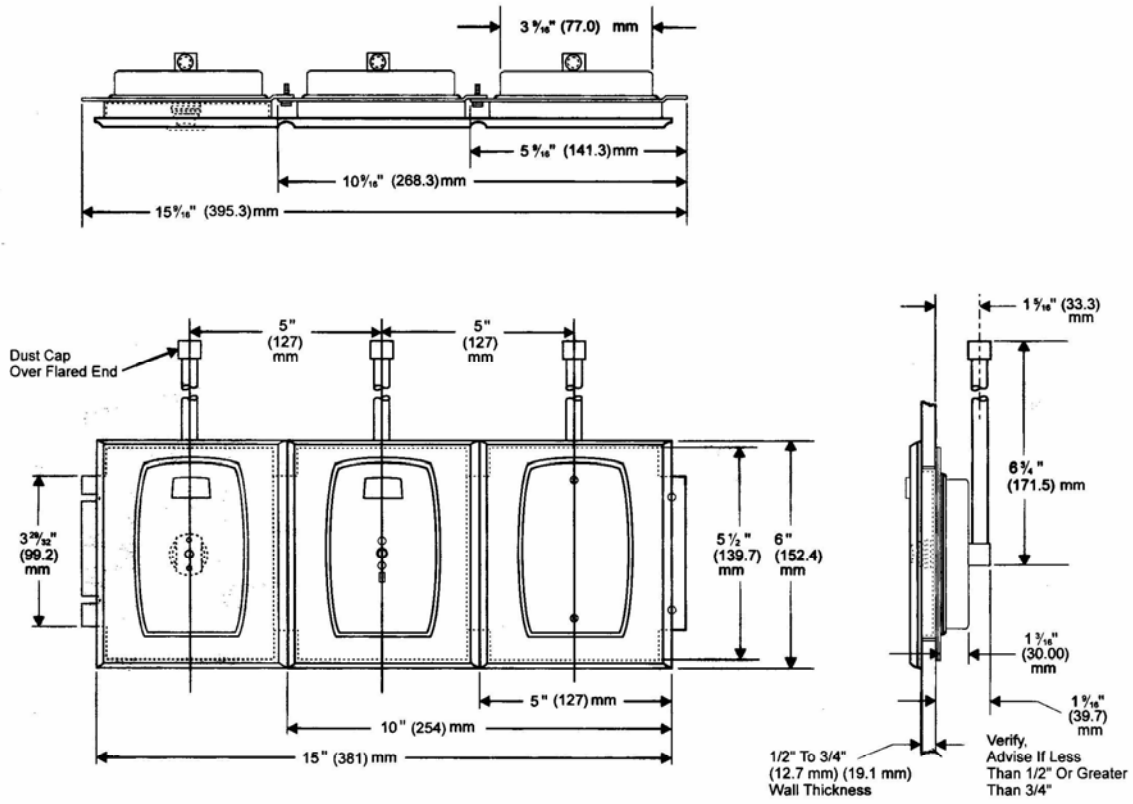
The outlet stations are fully compliant with NFPA 99 1999 and CSA Z-305, and are cleaned for oxygen service in accordance with CGA G-4.1. The outlet is UL listed. Rough-in plates for the outlets are zinc plated steel for corrosion resistance and fire safety. Finish plates are die-cast zinc, chrome-plated with brushed stainless inserts for appearance. Gas identification is provided by a polycarbonate plastic insert, color-coded by gas service.

The latch release is color-coded and labeled for the gas service. Release is easily accomplished with one hand using a push button release. The primary valve poppet provides a dust proof seal. Vacuum outlets may be used with or without slide brackets for vacuum collection bottles of up to 1/2-gallon capacity (where slides are used, provide one per vacuum outlet).

**Ordering Information**

Gas Service	Catalog Number U.S. Color Codes	Quantity	Catalog Number ISO Color Codes	Quantity
Oxygen	64-01-5001	73	64-01-5051	
Vacuum	64-01-5002	83	64-01-5052	
Air	64-01-5003	39	64-01-5053	
Nitrous Oxide	64-01-5004		64-01-5004	
Evacuation Vacuum	64-01-5006		64-01-5006	
Carbon Dioxide	64-01-5007		64-01-5007	
Oxygen/CO2 (CO2 less than 7%)	64-01-5008		64-01-5058	
Slide Bracket	64-06-0001	83	64-06-0001	

**Dimensional Data**



**Refer to installation instructions prior to assembly.**



*500 Series Chemetron Quick-Connect Medical Gas Outlets*



**MEDICAL GAS RESOURCES**  
MEDICAL GAS INNOVATIVE SOLUTIONS

16371 Gothard Street, Suite "F"  
Huntington Beach, CA 92647  
**888-743-8298**

[www.medicalgasresources.com](http://www.medicalgasresources.com)  
[info@medicalgasresources.com](mailto:info@medicalgasresources.com)

All specifications are nominal and subject to change without notice.

*Product Specification*